



SOLID STATE INC.

46 FARRAND STREET
BLOOMFIELD, NEW JERSEY 07003

www.solidstateinc.com

75HQ... SERIES

SCHOTTKY RECTIFIER

75 Amp

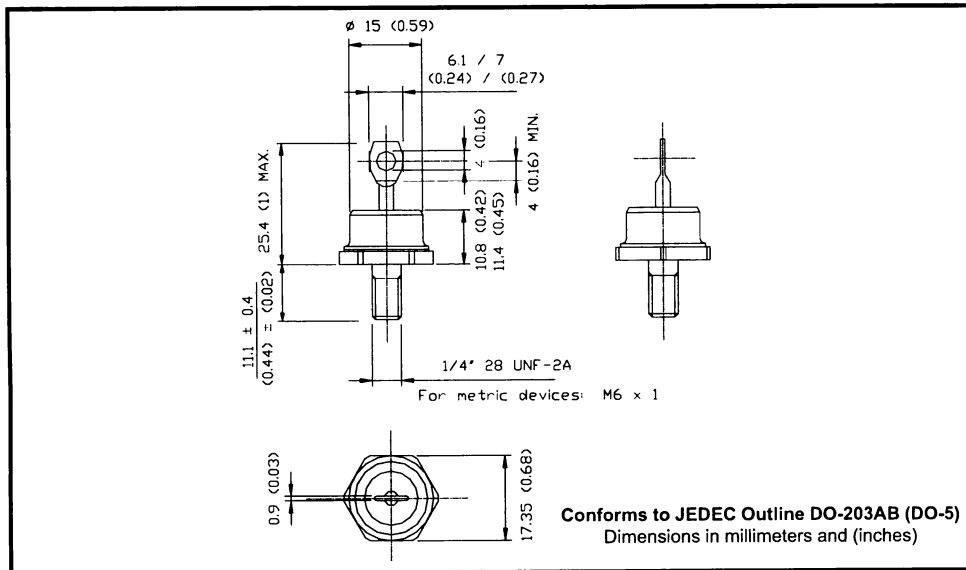
Major Ratings and Characteristics

Characteristics	75HQ...	Units
$I_{F(AV)}$ Rectangular waveform	75	A
V_{RRM} range	30 to 45	V
I_{FSM} @ $t_p = 5 \mu s$ sine	9000	A
V_F @ 75 Apk, $T_J = 125^\circ C$	0.63	V
T_J range	-65 to 175	$^\circ C$

Description/ Features

The 75HQ Schottky rectifier series has been optimized for low reverse leakage at high temperature. The proprietary barrier technology allows for reliable operation up to 175 °C junction temperature. Typical applications are in switching power supplies, converters, free-wheeling diodes, and reverse battery protection.

- 175 °C T_J operation
- Low forward voltage drop
- High frequency operation
- Guard ring for enhanced ruggedness and long term reliability
- Hermetic packaging



75HQ... Series

Voltage Ratings

Part number	75HQ030	75HQ035	75HQ040	75HQ045
V_R Max. DC Reverse Voltage (V)	30	35	40	45
V_{RWM} Max. Working Peak Reverse Voltage (V)				

Absolute Maximum Ratings

Parameters	75HQ	Units	Conditions
$I_{F(AV)}$ Max. Average Forward Current * See Fig. 5	75	A	50% duty cycle @ $T_C = 117^\circ\text{C}$, rectangular wave form
I_{FSM} Max. Peak One Cycle Non-Repetitive Surge Current * See Fig. 7	9000	A	5 μs Sine or 3 μs Rect. pulse 10ms Sine or 6ms Rect. pulse
	1180		
E_{AS} Non-Repetitive Avalanche Energy	101	mJ	$T_J = 25^\circ\text{C}$, $I_{AS} = 15$ Amps, $L = 0.9$ mH
I_{AR} Repetitive Avalanche Current	15	A	Current decaying linearly to zero in 1 μsec Frequency limited by T_J max. $V_A = 1.5 \times V_R$ typical

Electrical Specifications

Parameters	75HQ	Units	Conditions
V_{FM} Max. Forward Voltage Drop (1) * See Fig. 1	0.71	V	@ 75A
	0.88	V	@ 150A
	0.63	V	@ 75A
	0.78	V	@ 150A
I_{RM} Max. Reverse Leakage Current (1) * See Fig. 2	5	mA	$T_J = 25^\circ\text{C}$
	45	mA	$T_J = 125^\circ\text{C}$
C_T Max. Junction Capacitance	2600	pF	$V_R = 5V_{DC}$, (test signal range 100Khz to 1Mhz) 25°C
L_S Typical Series Inductance	7.5	nH	Measured from top of terminal to mounting plane
dv/dt Max. Voltage Rate of Change (Rated V_R)	10000	V/ μs	

(1) Pulse Width < 300 μs , Duty Cycle < 2%

Thermal-Mechanical Specifications

Parameters	75HQ	Units	Conditions
T_J Max. Junction Temperature Range	-65 to 175	$^\circ\text{C}$	
T_{stg} Max. Storage Temperature Range	-65 to 175	$^\circ\text{C}$	
R_{thJC} Max. Thermal Resistance Junction to Case	0.83	$^\circ\text{C}/\text{W}$	DC operation * See Fig. 4
R_{thCS} Typical Thermal Resistance, Case to Heatsink	0.25	$^\circ\text{C}/\text{W}$	Mounting surface, smooth and greased
wt Approximate Weight	15(0.53)	g(oz.)	
T Mounting Torque	Min.	23(20)	Non-lubricated threads
	Max.	46(40)	
Case Style	DO-203AB(DO-5)	JEDEC	

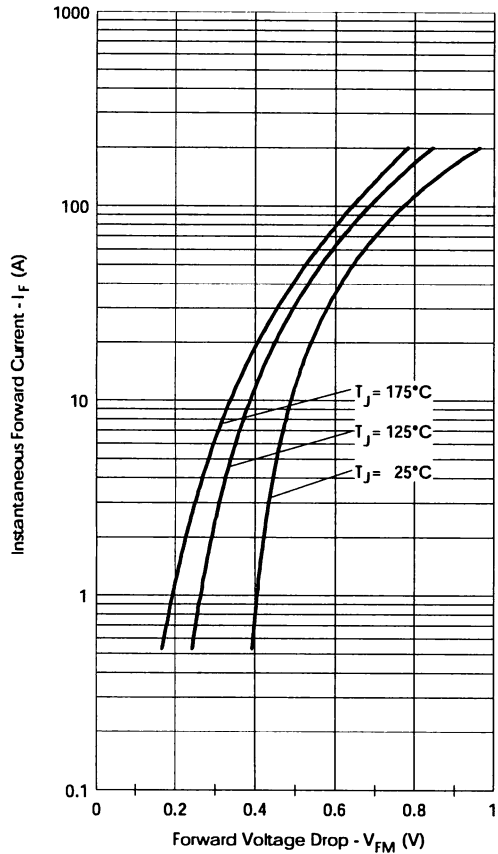


Fig. 1 - Maximum Forward Voltage Drop Characteristics

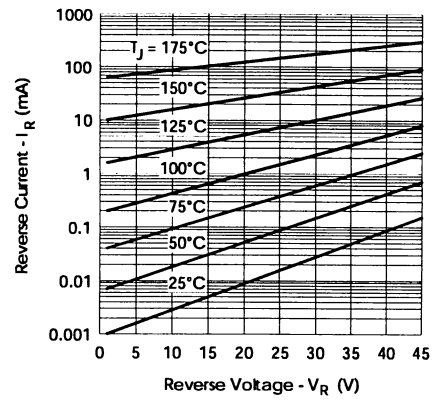


Fig. 2 - Typical Values Of Reverse Current Vs. Reverse Voltage

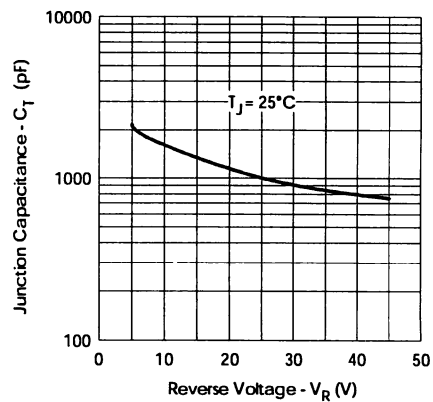


Fig. 3 - Typical Junction Capacitance Vs. Reverse Voltage

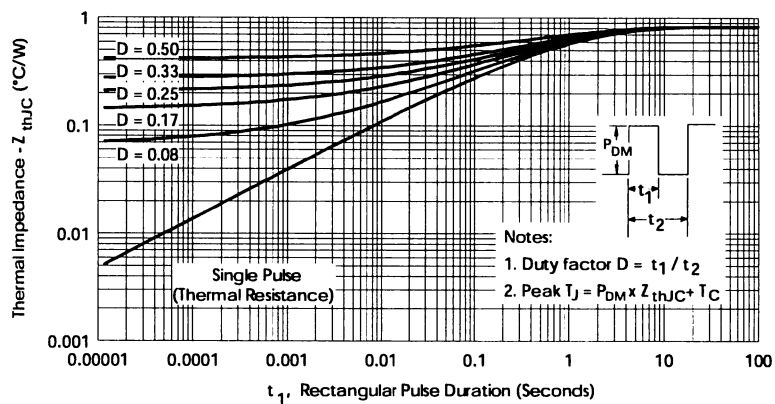


Fig. 4 - Maximum Thermal Impedance Z_{thJC} Characteristics

75HQ... Series

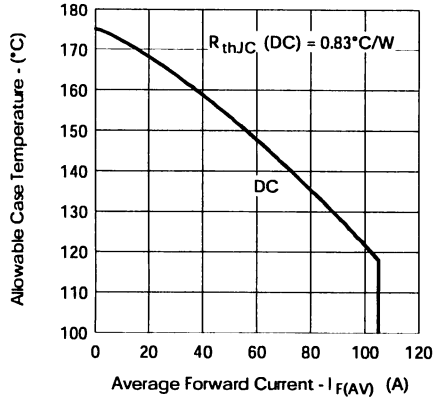


Fig.5- Maximum Allowable Case Temperature Vs. Average Forward Current

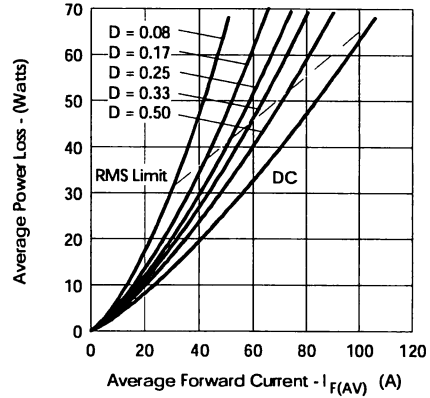


Fig.6- Forward Power Loss Characteristics

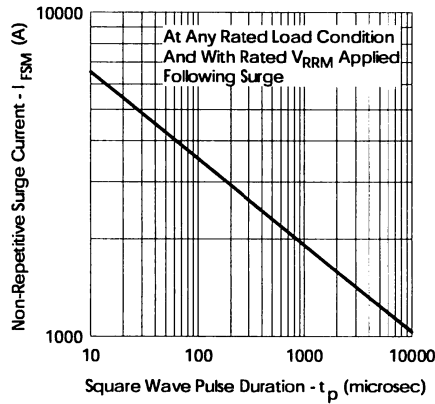


Fig.7- Maximum Non-Repetitive Surge Current

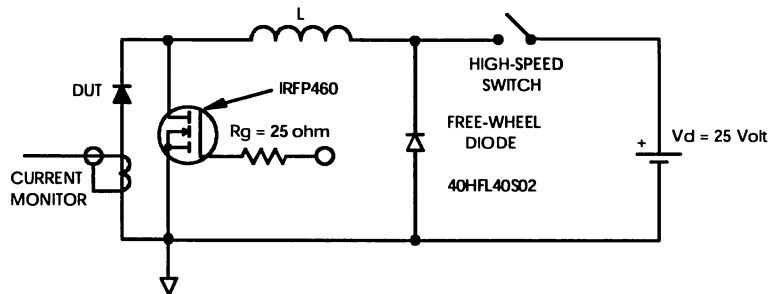


Fig.8- Unclamped Inductive Test Circuit