

# SPICE-Equivalent circuit model library

Table 1. Equivalent circuit data

Part Number	L ( $\mu$ H)	F <sub>res</sub> (MHz)	C1 (pF)	R1 ( $\Omega$ )	R2 Nominal DCR of winding ( $\Omega$ )
DRA124-R47-R	0.423	140.6	3.03	1735.99	0.0024
DRA124-1R0-R	0.821	97.6	3.24	2646.43	0.0031
DRA124-1R5-R	1.36	74.0	3.40	3647.75	0.0049
DRA124-2R2-R	2	59.8	3.54	4661.40	0.007
DRA124-3R3-R	2.79	49.8	3.66	5760.18	0.009
DRA124-4R7-R	4.7	37.4	3.85	8024.93	0.014
DRA124-6R8-R	7.28	29.4	4.03	10598.99	0.021
DRA124-8R2-R	8.9	26.3	4.11	12043.24	0.028
DRA124-100-R	10.4	24.2	4.17	13296.92	0.031
DRA124-150-R	14.1	20.4	4.30	16135.96	0.044
DRA124-220-R	23	15.6	4.52	22024.59	0.071
DRA124-330-R	34	12.6	4.70	28238.11	0.108
DRA124-470-R	46.3	10.6	4.84	34363.52	0.134
DRA124-680-R	70	8.5	5.05	44692.49	0.201
DRA124-820-R	81	7.8	5.12	49038.37	0.257
DRA124-101-R	99	7.0	5.23	55711.66	0.296
DRA124-151-R	152	5.5	5.46	73170.73	0.454
DRA124-221-R	210	4.6	5.63	89864.52	0.568
DRA124-331-R	327	3.6	5.89	119088.74	0.892
DRA124-471-R	473	3.0	6.11	150590.64	1.32
DRA124-681-R	682	2.4	6.34	190038.40	1.96
DRA124-821-R	827	2.2	6.46	214818.29	2.57
DRA124-102-R	1000	2.0	6.59	242393.66	2.94

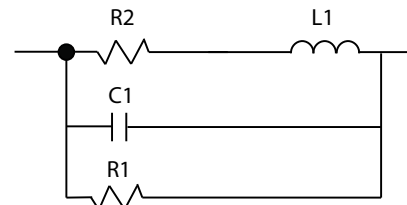


Figure 1. Equivalent circuit

## Disclaimer

The data provided is for reference and is intended for evaluation purposes only. Users should verify all intended results in the end application.

**Eaton**  
**Electronics Division**  
 1000 Eaton Boulevard  
 Cleveland, OH 44122  
 United States  
[www.eaton.com/electronics](http://www.eaton.com/electronics)

© 2018 Eaton  
 All Rights Reserved  
 Printed in USA  
 Publication No. DRA124 Spice  
 April 2018